

CROISSETTE - PENTHOUSE TERRACE WITH PANORAMIC VIEW

4 990 000 €

Ref 83459241

Cannes - Apartment 1343 sq ft

VANEAU
Luxury Real Estate



About this property

Located on the prestigious Croisette, this apartment offers panoramic views of the Mediterranean Sea. The apartment's large bay windows and 230 m2 terrace let you take full advantage of the view and incomparable exposure. This exceptional property is located on the top floor of a luxury condominium considered to be one of the finest in Cannes. The condominium features a large green space for a privileged welcome. A private elevator will take you directly to the interior of this 125m² apartment. It comprises a double living room of 46m², a fully equipped kitchen with quality materials, a master bedroom en suite with dressing room, bathroom and toilet, a second bedroom with shower room and a guest toilet. The apartment is air-conditioned and has been recently refurbished using quality materials, offering modern, refined features. It also boasts a large laundry room, an external technical room, a large cellar and a closed garage for two cars. Information on the risks to which this property is exposed is available on the the GÃ©orisques website: georisques.gouv.fr

Vaneau Cannes Croisette

✉ cannes@vaneaucotedazur.fr

P [+33 \(0\)4 93 94 91 76](tel:+330493949176)

Vaneau Riviera

17 , Boulevard de la
croisette 06400 Cannes

Price : 4 990 000 €

Surface : 1343 sq ft

Rooms : 4

Bedrooms : 2

Bathrooms : 2

Shower rooms : 0

Cellar : Yes

Elevator : Yes

Terrace : Yes

Caretaker : Yes

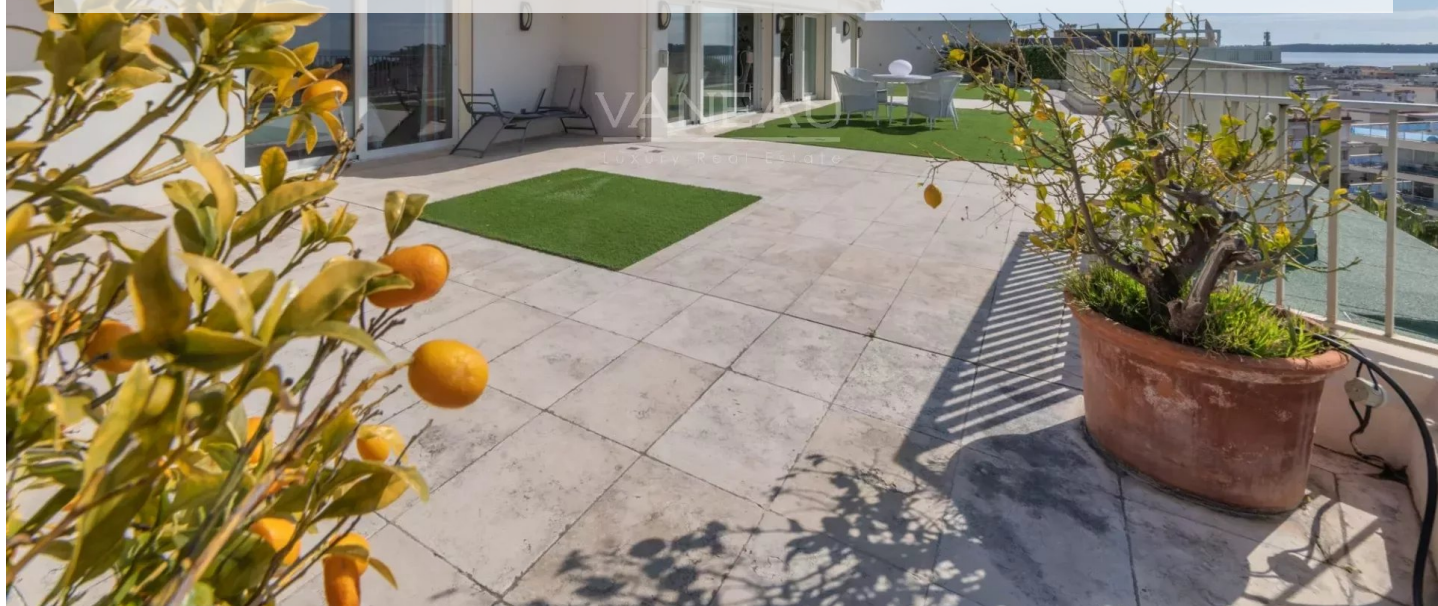
CROISSETTE - PENTHOUSE TERRACE WITH PANORAMIC VIEW

4 990 000 €

Ref 83459241

Cannes - Apartment 1343 sq ft

VANEAU
Luxury Real Estate



CROISSETTE - PENTHOUSE TERRACE WITH PANORAMIC VIEW

4 990 000 €

Ref 83459241

Cannes - Apartment 1343 sq ft

VANEAU
Luxury Real Estate

VANEAU
Luxury Real Estate

